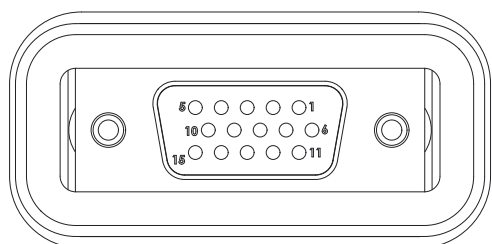


1

2

3

4

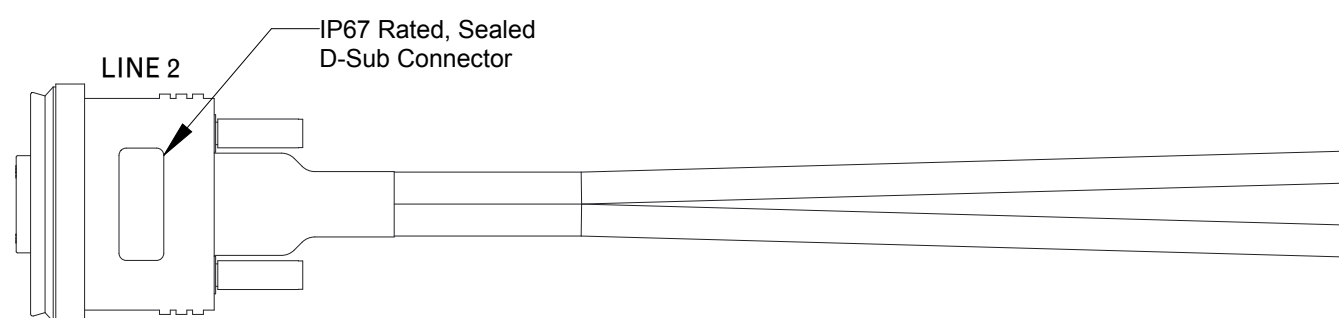


DB15 Female

REVISIONS			
REV	DESCRIPTION	DATE	APPROVED
A	Release to Production Per ECO 18-23496	2/22/18	DS

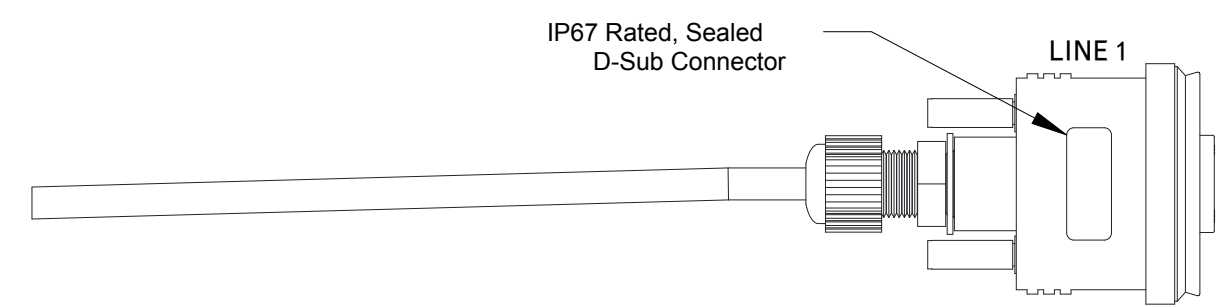
A

A



LINE 2

IP67 Rated, Sealed D-Sub Connector

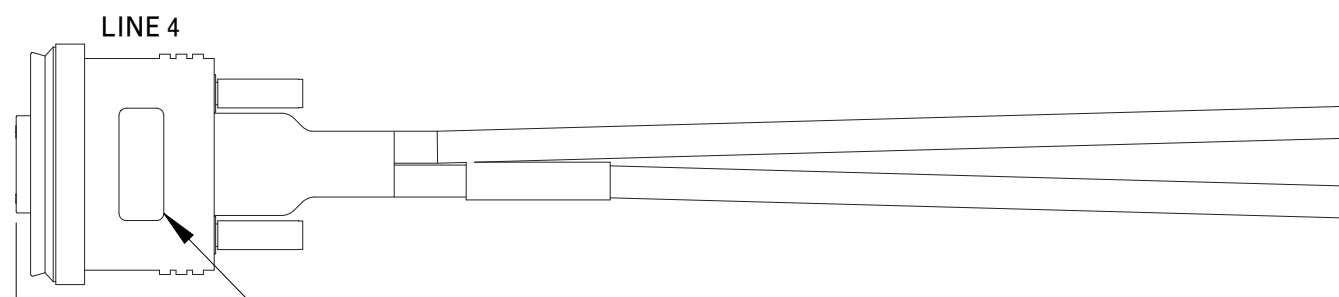


LINE 1

IP67 Rated, Sealed D-Sub Connector

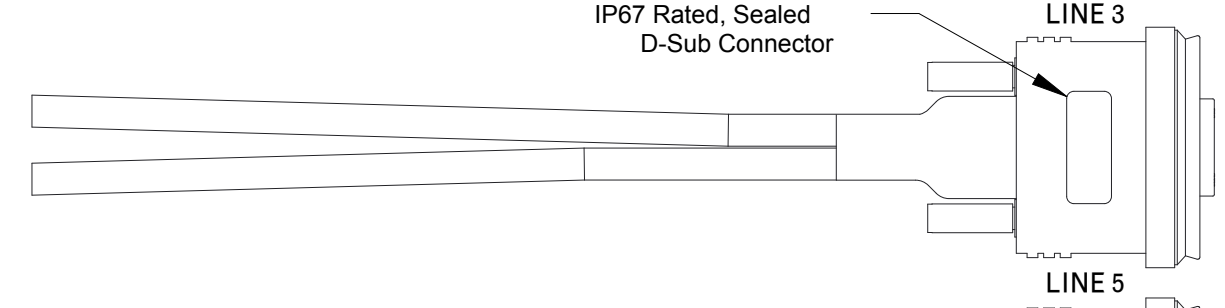
B

B



LINE 4

IP67 Rated, Sealed D-Sub Connector

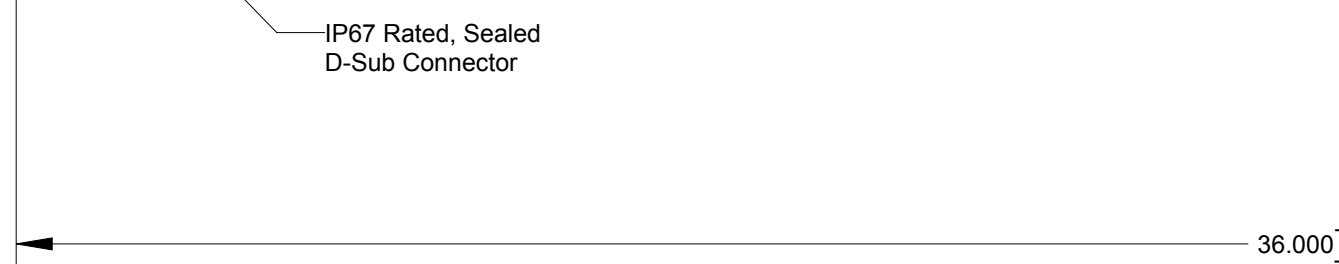


LINE 3

IP67 Rated, Sealed D-Sub Connector

C

C



LINE 5

IP67 Rated, Sealed D-Sub Connector

36.000<sup>+2.000</sup><sub>-0.000</sub>

D

D

<b>TOLERANCES:</b> Unless otherwise specified: All dimensions in inches .X +/- .025 .XX +/- .010 .XXX +/- .005 Angles +/- 1°					155 Swanson Road Boxborough, MA 01719-1316	
	<b>UPS 5 Unit Single Phase Redundancy Configuration Cable</b>				SOURCE: PRO/E SYN-9345	
THIS DRAWING IS THE PROPERTY OF SYNQOR LLC. It is not to be reproduced or copied, in whole or in part, or used for furnishing information to others, or for any purpose detrimental to the interests of SynQor. The information shown herein may be protected by patents owned or controlled by SynQor.		SIZE <b>B</b>	DATE <b>2/22/18</b>	DWG. NO. <b>SYN-9345</b>	REV <b>A</b>	
SCALE: 0.750		DRAWN: DS	CHECK:	SHEET 1 of 2		

1

2

3

4

A

A

B

B

C

C

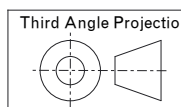

D

D

Connector / Pin #	Color	Description	Connector / Pin #	Twisted Pair #
Line2 / 1*	BLACK	CH1_B	Line1 / 1	Pair 1
			Line3 / 1*	
Line2 / 2*	WHITE	CH1_A	Line1 / 2	Pair 1
			Line3 / 2*	
Line2 / 3*	BLACK	GROUND	Line1 / 3	Pair 2
			Line3 / 3*	
N/C	RED	NOT USED	N/C	
Line2 / 4*	BLACK	CH2_B	Line1 / 4	Pair 3
			Line3 / 4*	
Line2 / 5*	GREEN	CH2_A	Line1 / 5	Pair 3
			Line3 / 5*	
Line2 / 14*	BLACK	CAN_HI	Line1 / 14	Pair 4
			Line3 / 14*	
Line2 / 15*	BLUE	CAN_LO	Line1 / 15	Pair 4
			Line3 / 15*	
Line4 / 1*	BLACK	CH1_B	Line3 / 1*	Pair 1
			Line5 / 1	
Line4 / 2*	WHITE	CH1_A	Line3 / 2*	Pair 1
			Line5 / 2	
Line4 / 3*	BLACK	GROUND	Line3 / 3*	Pair 2
			Line5 / 3	
N/C	RED	NOT USED	N/C	
Line4 / 4*	BLACK	CH2_B	Line3 / 4*	Pair 3
			Line5 / 4	
Line4 / 5*	GREEN	CH2_A	Line3 / 5*	Pair 3
			Line5 / 5	
Line4 / 14*	BLACK	CAN_HI	Line3 / 14*	Pair 4
			Line5 / 14	
Line4 / 15*	BLUE	CAN_LO	Line3 / 15*	Pair 4
			Line5 / 15	
Line1 / 8	N/A	CABLE ID	Line1 / 10*	JUMPER
Line1 / 9	N/A	CABLE ID	Line1 / 10*	JUMPER
Line1 / 12	N/A	CABLE ID	Line1 / 10*	JUMPER
Line2 / 8	N/A	CABLE ID	Line2 / 10*	JUMPER
Line2 / 9	N/A	CABLE ID	Line2 / 10*	JUMPER
Line2 / 12	N/A	CABLE ID	Line2 / 10*	JUMPER
Line3 / 8	N/A	CABLE ID	Line3 / 10*	JUMPER
Line3 / 9	N/A	CABLE ID	Line3 / 10*	JUMPER
Line3 / 12	N/A	CABLE ID	Line3 / 10*	JUMPER
Line4 / 8	N/A	CABLE ID	Line4 / 10*	JUMPER
Line4 / 9	N/A	CABLE ID	Line4 / 10*	JUMPER
Line4 / 12	N/A	CABLE ID	Line4 / 10*	JUMPER
Line5 / 8	N/A	CABLE ID	Line5 / 10*	JUMPER
Line5 / 9	N/A	CABLE ID	Line5 / 10*	JUMPER
Line5 / 12	N/A	CABLE ID	Line5 / 10*	JUMPER

\* Note = Double Wire Connections

- Notes:
- Reference SynQor specification 705-1000258.
  - 24 AWG shielded wire with 8 conductors, 4 twisted pairs, CMP rated wire. Insulation: TPE 350V, -50 C to 90 C.
  - Nominal wire diameter: 0.252"
  - Weight: TBD

<b>TOLERANCES:</b> Unless otherwise specified: All dimensions in inches .X +/- .025 .XX +/- .010 .XXX +/- .005 Angles +/- 1°					155 Swanson Road Boxborough, MA 01719-1316	
	<b>UPS 5 Unit Single Phase Redundancy Configuration Cable</b>				SOURCE: PRO/E SYN-9345	
THIS DRAWING IS THE PROPERTY OF SYNQOR LLC. It is not to be reproduced or copied, in whole or in part, or used for furnishing information to others, or for any purpose detrimental to the interests of SynQor. The information shown herein may be protected by patents owned or controlled by SynQor.		SIZE <b>B</b>	DATE <b>2/22/18</b>	DWG. NO. <b>SYN-9345</b>	REV <b>A</b>	
SCALE: 0.750		DRAWN: DS	CHECK:	SHEET 2 of 2		